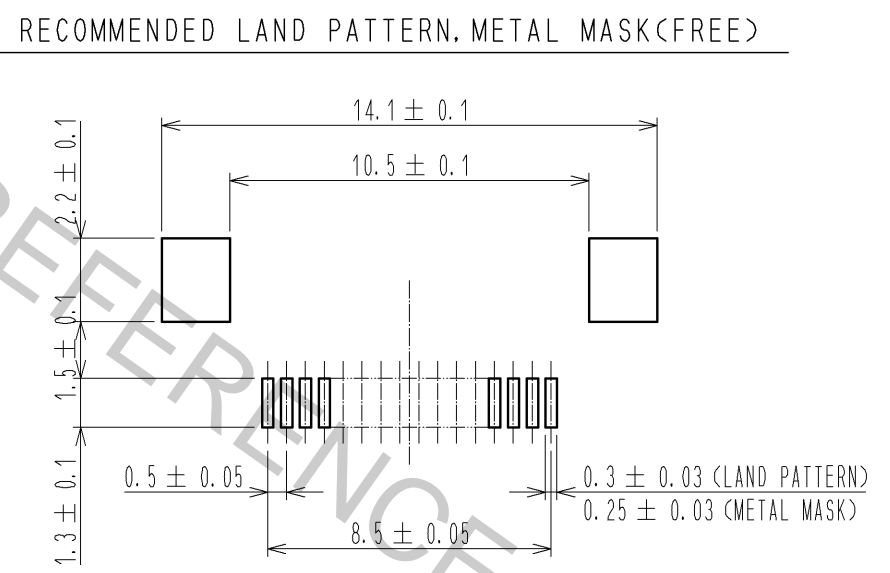
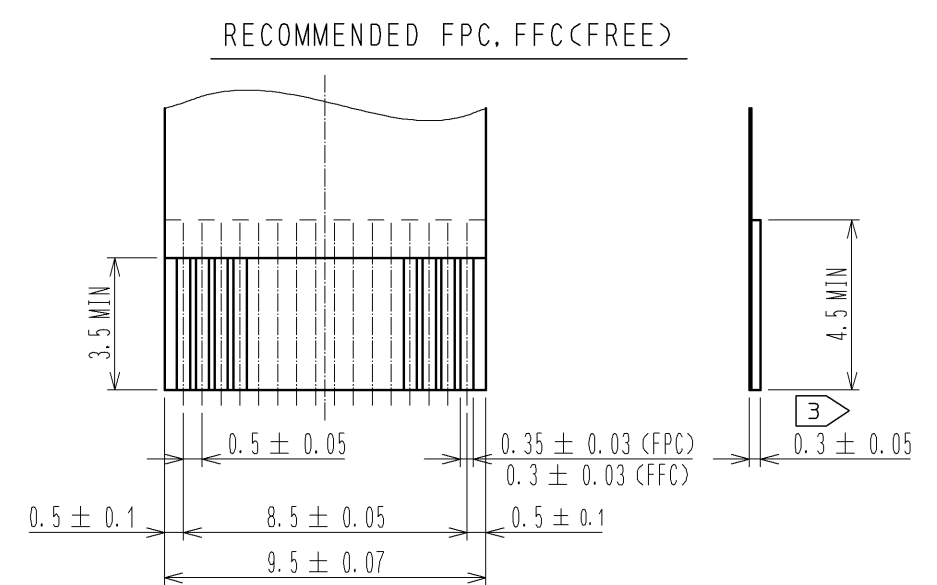




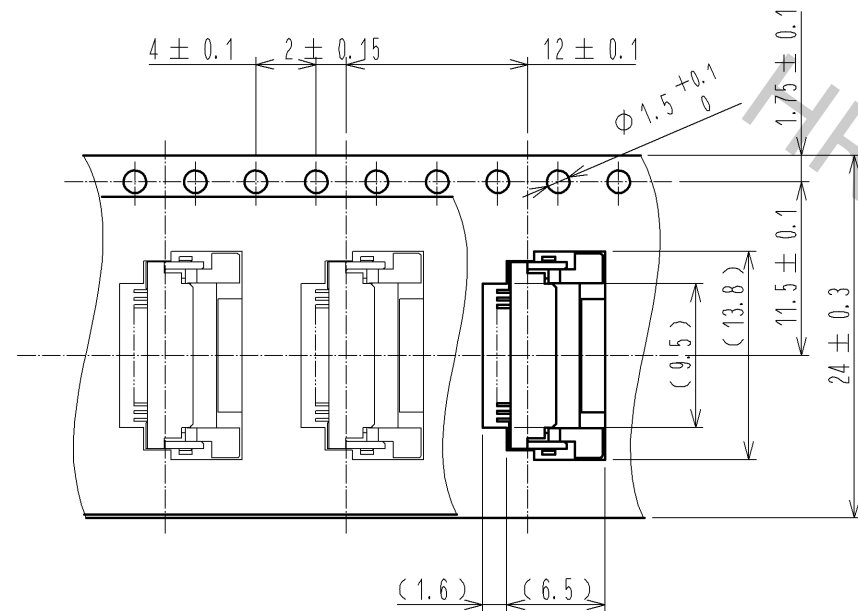
NOTE 1 1 REFERENCE IS a.
2 LEAD CO-PLANARITY SHALL BE 0.1 MAX.
3 THICKNESS OF SUPPORTING TAPE SHALL BE 0.188(7.5mil) MIN.

RECOMMENDED METAL MASK THICKNESS $t=0.15$

| | | | | | |
|-----|-----------------|--|-----|-------------|------------------|
| 4 | BRASS | TIN PLATING 1μMIN OVER NICKEL 1μMIN. | 8 | (CONNECTOR) | |
| 3 | PHOSPHOR BRONZE | GOLD PLATING 0.05μMIN OVER NICKEL 1μMIN. | 7 | POLYSTYRENE | |
| 2 | PPS | DEEP BROWN UL94V-0 | 6 | POLYESTER | |
| 1 | POLYAMIDE | BEIGE UL94V-0 | 5 | POLYSTYRENE | |
| NO. | MATERIAL | FINISH , REMARKS | NO. | MATERIAL | FINISH , REMARKS |

| | | | | | | | | |
|---|--|----------------------------------|--|-----------------------------|--|---|-----------------------|------------------|
| UNITS mm | | SCALE 5 : 1 | | COUNT 1 | DESCRIPTION OF REVISIONS DIS-F-003410 | DESIGNED MK. YASUMI | CHECKED FN. TAMURA | DATE 09.12.11 |
|  HIROSE ELECTRIC CO., LTD. | | APPROVED : RI. TAKAYASU 08.09.02 | | DRAWING NO. EDC3-150553-51 | | | | |
| | | CHECKED : HS. SAKAMOTO 08.09.01 | | PART NO. FH12A-18S-0.5SH<5> | | | | |
| | | DESIGNED : MK. YASUMI 08.08.26 | | CODE NO. | | | | |
| | | DRAWN : MK. YASUMI 08.08.26 | | CL586-0553-7-55 | | | | |
| | | | | | |  1 | | 2 |

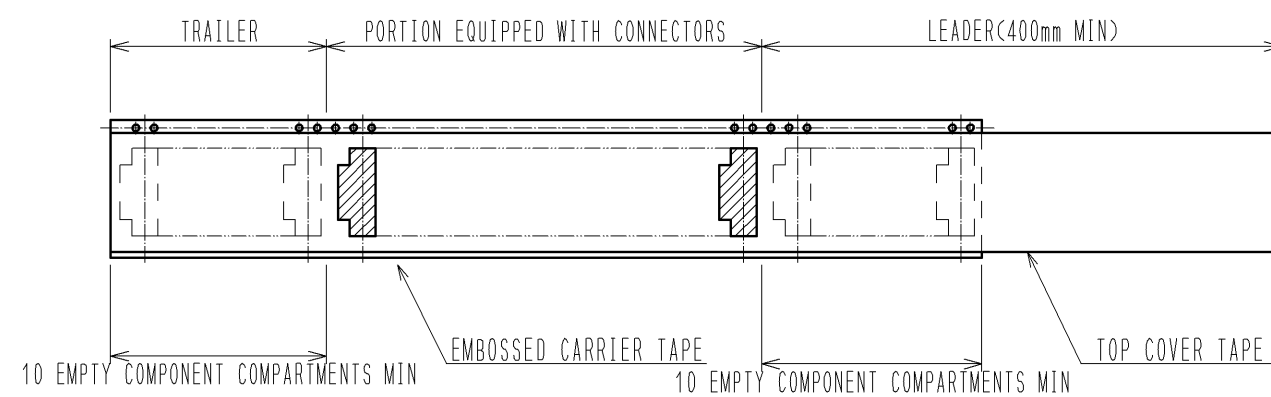
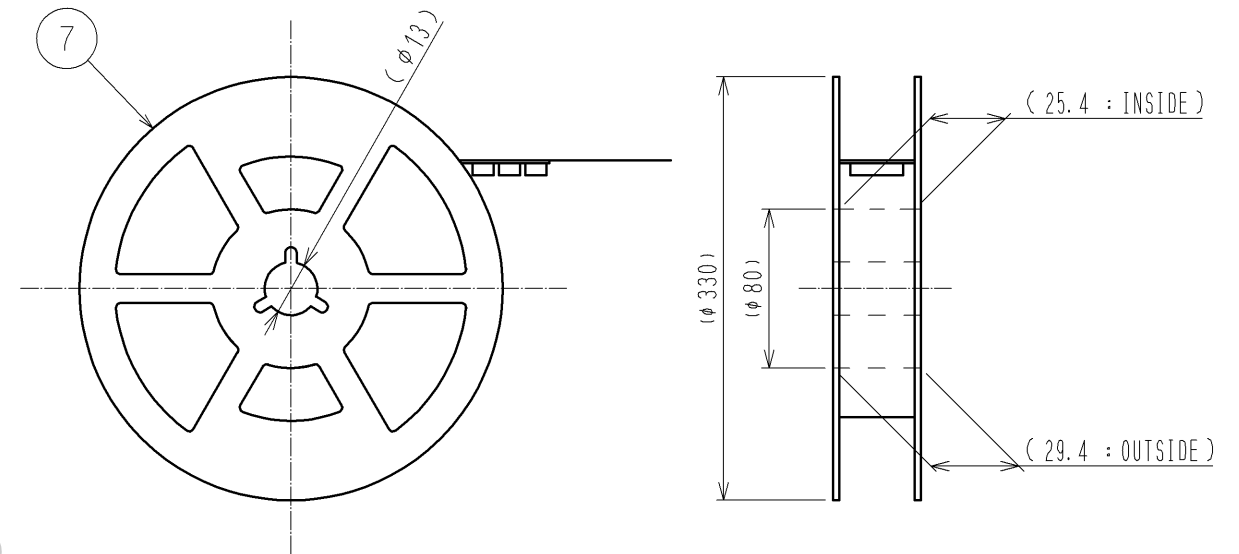
EMBOSSED CARRIER TAPE DIMENSION(2:1)



DIRECTION OF UNREELING



REEL DIMENSION(FREE)



NOTE 4 THE DIMENSIONS IN PARENTHESES ARE FOR REFERENCE.
5 1 REEL:2000 CONNECTORS.

<DRAWING FOR PACKING>

| | | |
|-----|-------------|---------------------|
| HRS | DRAWING NO. | EDC3-150553-51 |
| | PART NO. | FH12A-18S-0.5SH(55) |
| | CODE NO. | CL586-0553-7-55 |
| | | 2/2 |